

INTENDED USE:

The enclosure is a two part non-metallic enclosure with a gasket. All c3 Controls IEC 22mm devices can be installed both illuminated* or non-illuminated and with one row of contacts. Factory assembled units will come with specified operators already installed, will only need to remove device if alignment with conduit is required. If so, follow installation instructions provided with your operator to insure proper installation.

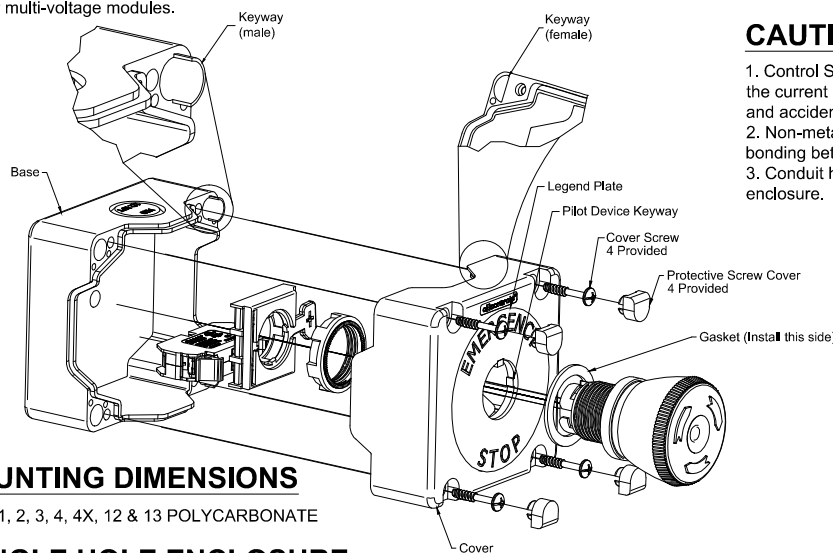
Ratings:

Protection type IP66 in accordance with IEC 60529

Protection type UL 1, 2, 3, 4/4X, 12 & 13 in accordance with UL50E.

To maintain these environmental ratings of this enclosure, install only UL listed or UL recognized conduit hubs, strain relief or 22mm pilot devices with the same environmental ratings, in compliance with the installation instructions of the device.

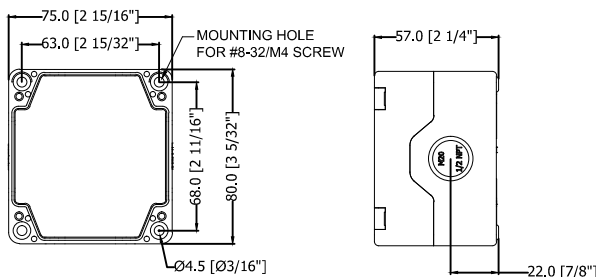
* Transformer & Resistor light modules will not fit within enclosure depth, use full or multi-voltage modules.



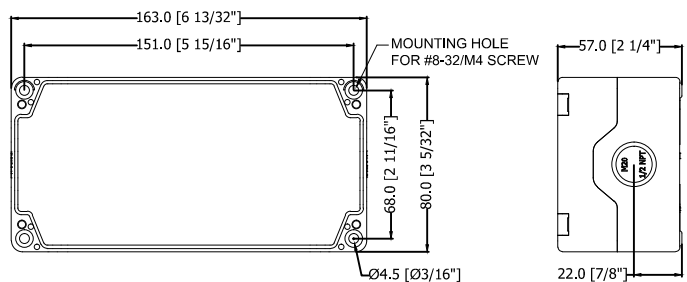
MOUNTING DIMENSIONS

TYPE 1, 2, 3, 4, 4X, 12 & 13 POLYCARBONATE

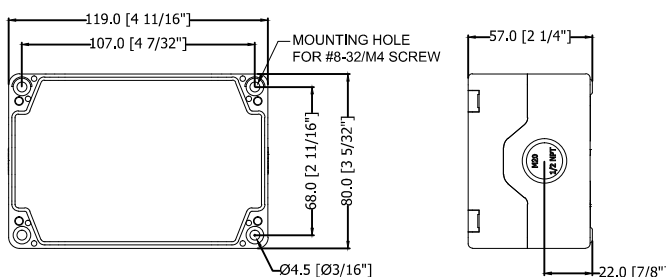
SINGLE HOLE ENCLOSURE



THREE HOLE ENCLOSURE



TWO HOLE ENCLOSURE



WARNING

- Disconnect power before proceeding with any work on this equipment.
- Installation and maintenance by technical personnel only.
- Installation of c3controls product must be in accordance with the NEC (U.S. National Electrical Code) regulations or local codes/standards per your application. Any violation of these safety requirements could result in a personal injury and/or result in damage to the equipment.

AVERTISSEMENT

- Débranchez le Pouvoir (la Puissance) avant la suite de n'importe quel travail sur cet équipement.
- Installation et maintien par personnel technique seulement.
- L'installation de produit c3controls doit être conformément au NEC (le Code Électrique national américain) des règlements ou des codes/normes locaux par votre demande. N'importe quelle violation de ces exigences de sécurité pourrait aboutir à une blessure personnelle et/ou aboutir aux dégâts à l'équipement.

Product installation instructions and wiring schematics may be downloaded from our website, www.c3controls.com.



ENCLOSURES CONFORMITY TO STANDARDS
 UL 50
 UL 50E
 CSA C22.2 No. 94.2-07
 IEC 60529

ENCLOSURES CERTIFICATIONS
 UL Listed
 CE Marked

FACTORY ASSEMBLED ENCLOSURES CONFORMITY TO STANDARDS
 UL 508
 UL 50E
 IEC 60947-5
 IEC 60529

FACTORY ASSEMBLED ENCLOSURES CERTIFICATIONS
 UL Listed
 CE Marked